

BAM

BRADBURY ART MUSEUM

OPENING RECEPTION
SEPTEMBER 26, 5pm

2019 FACULTY BIENNIAL

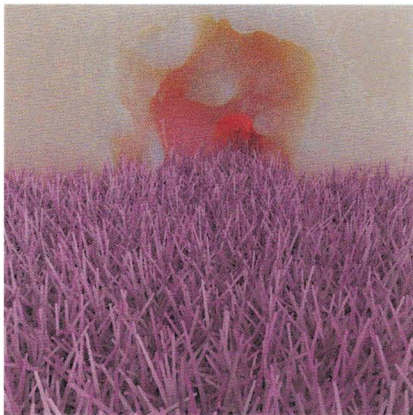
CURTIS STEELE
PAPIER SURFIN

TEDDY WIGGINTON
WHY

on view

SEPTEMBER 26 - NOVEMBER 13, 2019

Fowler Center - Arkansas State University
201 Olympic Drive
Jonesboro, Arkansas
870 972 3471
BradburyArtMuseum.org



BAM HOURS

Tuesday & Wednesday: noon to 5pm

Thursday: noon to 7pm

Friday & Saturday: noon to 5pm

Sunday: 2 to 5pm

front: **Melissa Wilkinson**, *Seeing Wreath*, 2019, watercolor on paper, 40 x 30 inches

interior top: **Curtis Steele**, *Papier Surfin: Burungtopi*, 2018, digital drawing, 13 color inkjet print, 30 x 24 inches

interior bottom: **Teddy Wigginton**, *Fight*, 2018, castable foam and found objects, 24.5 x 6 x 8 inches

back left: **Cameron Buckley**, *Confused with Someone Who Cares*, 2019, digital render, 48 x 48 inches

back center: **Bill Rowe**, *H.C.W.'s Last Ray of Hope. B.R. Version*, 2019, found objects, 28 x 15 x 15 inches

back right: **Michael Diaz**, *Spirits & Robots*, 2018, acrylic, charcoal, pastel, and collaged paper on canvas, 53 x 53 inches

