

SHELLEY GIPSON  
WORLD UPSIDE DOWN



BRADBURY ART MUSEUM  
AUGUST 30 - SEPTEMBER 29, 2017

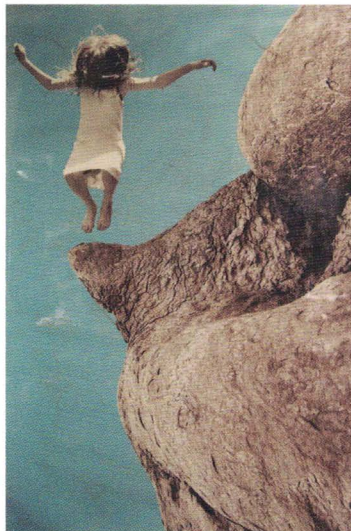
Little voices call to me.  
Isolate. Reverberate.  
I become me.

Stand like a relic, all barbs and thorns  
Stumble and fumble, then conquer.  
The strength of a thousand nails  
Push beyond the limits of what could be.  
You will see how you came to be.

You are my reflection.

The images that you see reflect defiance, aggression, solitude, strife and survival. They tell stories of the hopes and dreams of children, and their parents. They are the limitless worlds of dinosaurs stomping, animals with tails, unicorns and dragons, and magical folk that can fly. They are also the clash of reality. As child becomes adult, hopes are dashed and dreams fade away. The limitless becomes confined. The world becomes dystopian. Are things as they should be? Or, is it a world turned upside down?

- Shelley Gipson



front: *Shoulder*, 2017  
digital print and hair, 33 x 50 inches

back: *Nose Knows*, 2017  
digital print and hair, 50 x 33 inches



BRADBURY ART MUSEUM

201 Olympic Drive | Jonesboro, AR 72401 | 870 972 3471 | [BradburyArtMuseum.org](http://BradburyArtMuseum.org)

